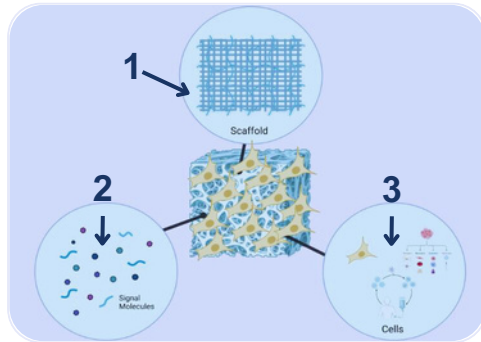


WHAT'S BLOOCELL®

Gives confidence to physicians in the field of tissue regenerating. Bloocell® is "ARTIFICIAL TISSUE TECHNOLOGY" that can be produced in complementary, therapeutic and personalized anatomical forms in the treatment of tissue deficiency.

CONTENT OF BLOOCELL



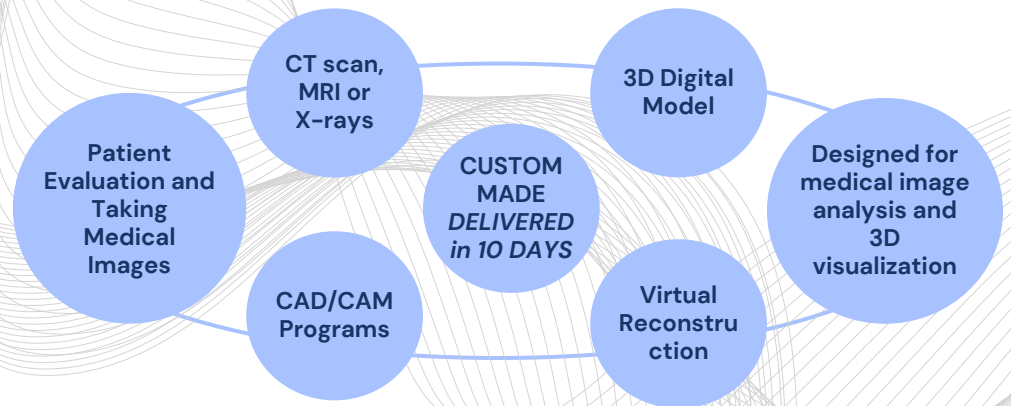
2 - TCP: Promotes the adhesion of osteoblasts, the bone-forming cells, and encourages their activity, ultimately leading to new bone formation.

1 - PCL: To mimic the architecture and function of natural tissues.

3 - HA: Ability to support cell adhesion, migration, and proliferation.

THE SUCCES OF BLOOCELL® TECHNOLOGY CONTINUES TO BE PUBLISHED IN LEADING SCIENTIFIC CONGRESSES

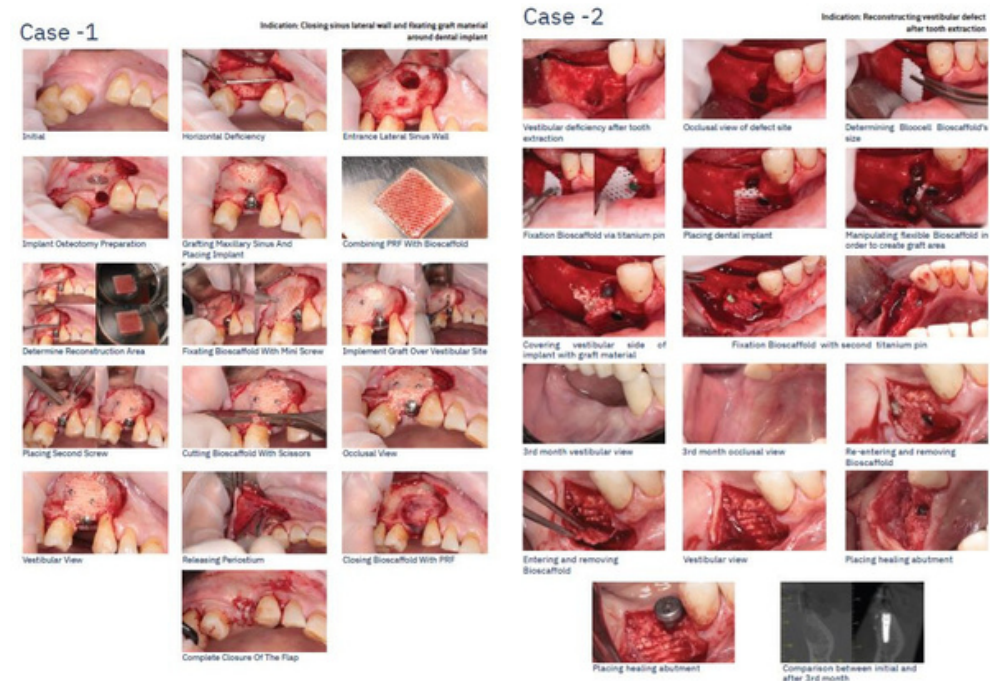
- Guided bone regeneration GBR is one of the most commonly used treatment options for the repair of vertical and horizontal bone defects
- Bioscaffold membranas used in ridge augmentation in maxillofacial surgery on the amount of newly formed bone after application in three - dimensional (3D)
- Patients (7 females and five males)
- Vertical bone gain were 1.63 - 0.69 mm
- Horizontal bone gain were 4.03 - 1.45 mm
- The implant survival rates were 100% in all patients



BLOOCELL® PRODUCT LINE CHEST WALL RECONSTRUCTION

BLOOCELL BIOSCAFFOLD SHEET

	DESCRIPTION	A	B	THICKNESS mm
	Bloocell Bioscaffold Mesh Synthetic	10	15	1
	Bloocell Bioscaffold Mesh Synthetic	15	15	1
	Bloocell Bioscaffold Mesh Synthetic	15	20	1
	Bloocell Bioscaffold Mesh Synthetic	20	20	1



bloocell
the language of technology

**ARTIFICIAL
TISSUE
TECHNOLOGIES**



Do you hear
symphony?

12 Daniel Road, Suite 318-12e Fairfield, New Jersey
07004 ABD Laboratuvar: Boğaziçi Üniversitesi. Hayat Bil.
ve Tek. uygulama. ve Araştırma Merkezi/İSTANBUL

✉ info@bloocell.com
☎ +90 538 058 50 78
🌐 www.bloocell.com.tr

**BLOOCELL
DENTAL
REGENETRAIVE
SOLUTION**

